



OUR  
JOURNEY *of*  
HOPE<sup>®</sup>  
Cancer Care  
Leadership Training

# Welcome to Our Journey of Hope<sup>®</sup> Cancer Care Leadership Training

Thank you for attending Cancer Care Leadership Training. Over the next two days, you will be hearing from experienced cancer ministry pastors, cancer patients and medical professionals to help you understand the need, the vision and the process to provide hope and encouragement to people living with cancer. When you complete this training, you will be empowered to impact the lives of potentially thousands of people.

As faith leaders, you already understand the heart of God to minister to those who are suffering. What you will gain during this training is the practical knowledge and tools to minister specifically to those whose lives have been touched by cancer. Cancer carries a weight of fear and despair like no other medical diagnosis and being able to lift that burden and offer hope and comfort to those affected by it is one of the greatest acts of love that Godly leaders can offer.

The agenda you received outlines the training. This binder is for your personal reference throughout the training as an additional resource for further study. The information contained herein does not necessarily reflect the exact order or content of the information your speakers will present to you but is designed to be complementary.

## Leadership Training Objectives

1. Immerse you in an emotional, spiritual, and relational experience centered around cancer care ministry
2. Inform you about cancer's nature, impact, and treatment
3. Equip you with the tools and techniques to begin effective cancer ministries in your faith communities
4. Inspire you to begin a cancer care ministry

# What Is Our Journey of Hope?

## Our Journey of Hope<sup>®</sup> Vision Statement

*To be recognized and trusted by faith leaders as the primary provider of spiritual insight and practical resources to develop cancer care ministry in local faith communities.*

## The Ministry of Our Journey of Hope

Our Journey of Hope<sup>®</sup> is a \_\_\_\_\_ cancer care ministry outreach.

We provide faith leaders with the \_\_\_\_\_, training and support to raise up cancer care ministries in their churches and communities.

Our goal is to prepare you with the \_\_\_\_\_  
\_\_\_\_\_ to provide hope through cancer care ministry.

## Sponsored By COH

Our Journey of Hope is an educational outreach brought to you by the Spiritual Support teams at City of Hope<sup>®</sup> (COH).

## The History of This Ministry

Our Journey of Hope was established in \_\_\_\_\_.

Trained individual congregations on the key components of building a compassionate, successful cancer care ministry

In \_\_\_\_\_, the vision was expanded, and we began to offer cancer care leadership training in three cities across the U.S.



## Our Journey of Hope Cancer Care Ministry Network



### Cancer Care Leadership Training Provides:

- \_\_\_\_\_ seminar with insights from patients, ministry leaders and medical professionals
- Training on leading an in-depth, eight-week group curriculum
- Online ministry resources for additional training, encouragement, and \_\_\_\_\_
- Monthly emails and information to guide new cancer care ministries

### When you complete this training, you will have:

- A clear step-by-step \_\_\_\_\_ for starting your cancer care ministry
- A complete \_\_\_\_\_ for training your cancer care ministers
- Ongoing \_\_\_\_\_ to clinical and spiritual support
- Access to a \_\_\_\_\_ of fellow ministers and leaders

### The Value of Cancer Care Ministry

*Bear one another's \_\_\_\_\_, and so fulfill the law of Christ.*  
 Galatians 6:2 (NKJV)

*Worry weighs a person down; an \_\_\_\_\_ word cheers a person up.*  
 Proverbs 12:25 (NLT)

### Why cancer care ministry is different than other types of ministry:

- Cancer attacks \_\_\_\_\_
- A cancer diagnosis often feels like a \_\_\_\_\_
- \_\_\_\_\_ and \_\_\_\_\_ need ministry as well
- Cancer often causes people to \_\_\_\_\_ their entire lives
- Cancer makes people uncomfortable, so patients often feel \_\_\_\_\_, ignored and in the way

### How it can help patients and caregivers:

- Patients do not want to be \_\_\_\_\_ by their cancer
- Caregivers are so busy taking care of the patient they sometimes neglect their own \_\_\_\_\_
- Patients and caregivers often have no \_\_\_\_\_ or \_\_\_\_\_ for daily tasks
- God often uses cancer care ministry to bring \_\_\_\_\_ and \_\_\_\_\_ healing to individuals and their relationships

### Personal rewards from this ministry include:

- The miraculous \_\_\_\_\_ and \_\_\_\_\_ that God often gives His children dealing with cancer blesses us
- Profound \_\_\_\_\_
- The opportunity to see God change a person's life
- A stronger \_\_\_\_\_

## The Spiritual, Emotional and Social Effects of Cancer

### Spiritual Effects

- Struggle to believe in God's \_\_\_\_\_
- Resentment or \_\_\_\_\_
- Lack of \_\_\_\_\_
- Looking for a reason why they are being \_\_\_\_\_
- Trying to strike a deal with God for their life
- \_\_\_\_\_ their "fate" as set in stone
- \_\_\_\_\_ of life and mortality

## Emotional Effects

- Feelings of \_\_\_\_\_
- Misdirected \_\_\_\_\_
- Overwhelming \_\_\_\_\_/helplessness

## Social Effects

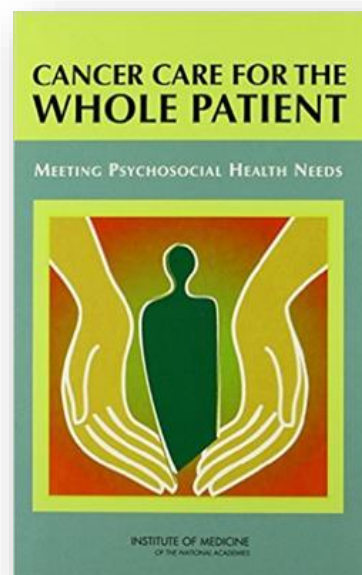
- \_\_\_\_\_ from family and friends
- \_\_\_\_\_ over physical changes
- Managing uninformed and unsolicited \_\_\_\_\_
- Stress within the \_\_\_\_\_

## 7 Critical Psychosocial Needs of Cancer Patients

1. Information on cancer and its \_\_\_\_\_
2. Help in coping with emotions related to cancer
3. Material and logistical \_\_\_\_\_
4. Help in managing disruptions in work, school, and family
5. Assistance in changing \_\_\_\_\_
6. Help in managing the illness
7. \_\_\_\_\_ advice and assistance

*Cancer Care for the Whole Patient:  
Meeting Psychosocial Health Needs.*

Originally published in 2008  
The Institute of Medicine, 456 pages

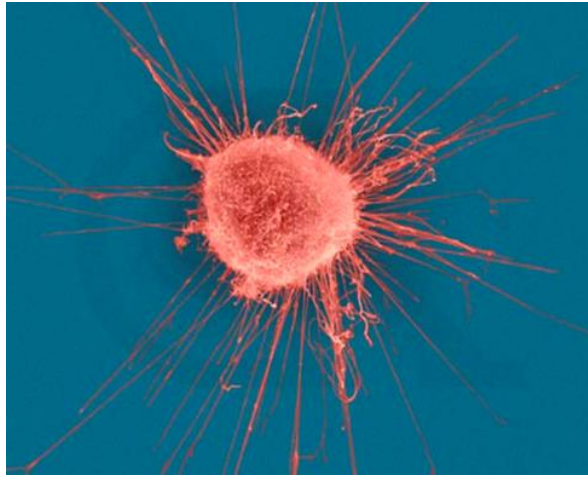


# Who Cancer Affects?

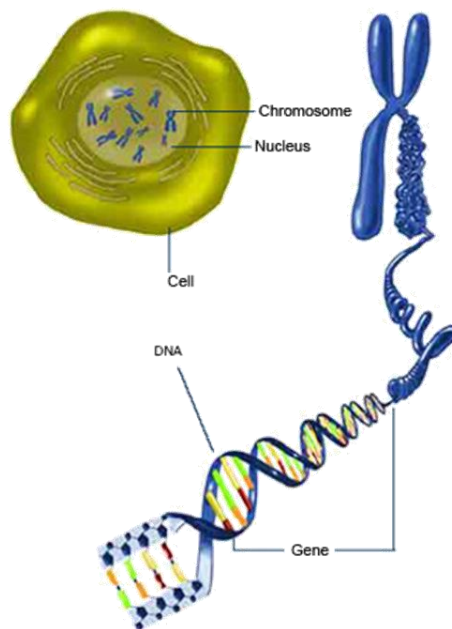
“ \_\_\_\_\_ of men and woman  
will be diagnosed with cancer during their lifetime

According to the National Cancer Institute  
Updated June 2023

## Cancer Begins with One Cell



## Cell-Chromosome-DNA



## Where Cancer Originates

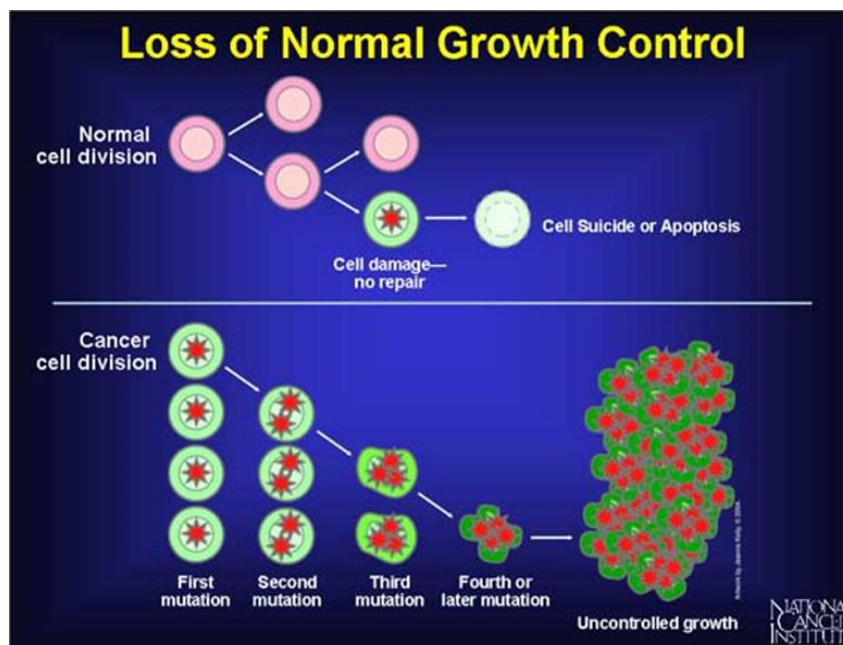
- **Carcinoma** – the most common type of cancer begins from cells that cover external and internal body \_\_\_\_\_.
- **Sarcoma** – cancer that begins from cells found in the \_\_\_\_\_ tissues.
- **Lymphoma** – cancer that begins in the lymph nodes and tissues of the body's \_\_\_\_\_ system.
- **Leukemia** – cancer of the immature blood cells that grows in the \_\_\_\_\_ and then accumulates in large numbers in the bloodstream.

## What Cancer Is

Every cancer is different.

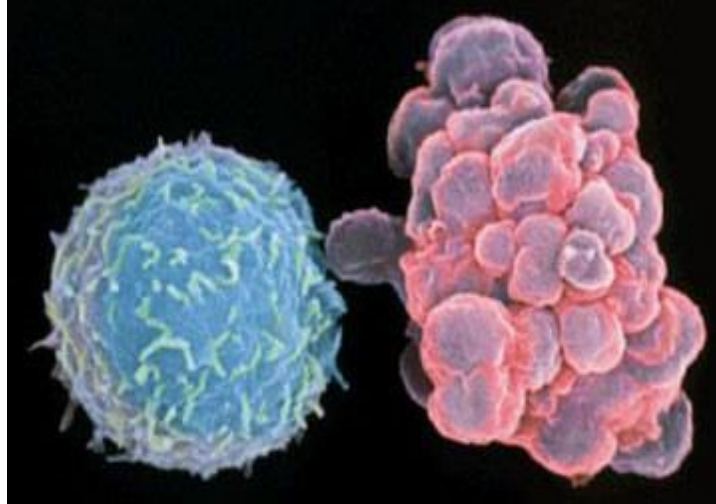
It is unique because each cancer's \_\_\_\_\_ is unique.

\_\_\_\_\_, experiences, and \_\_\_\_\_ will be different for each person

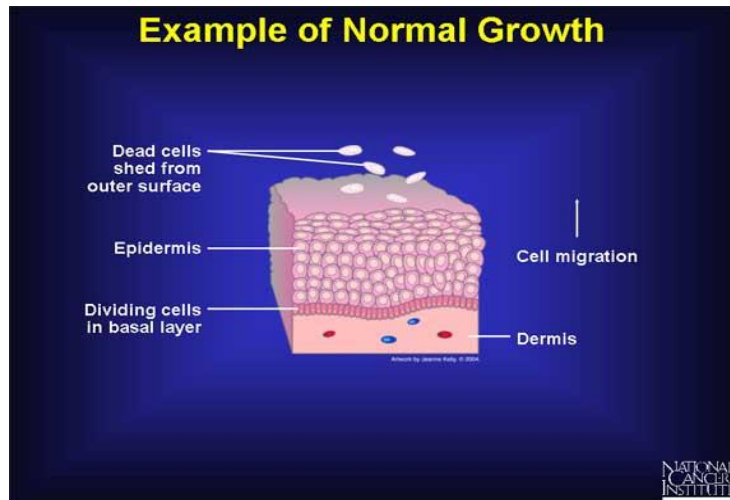




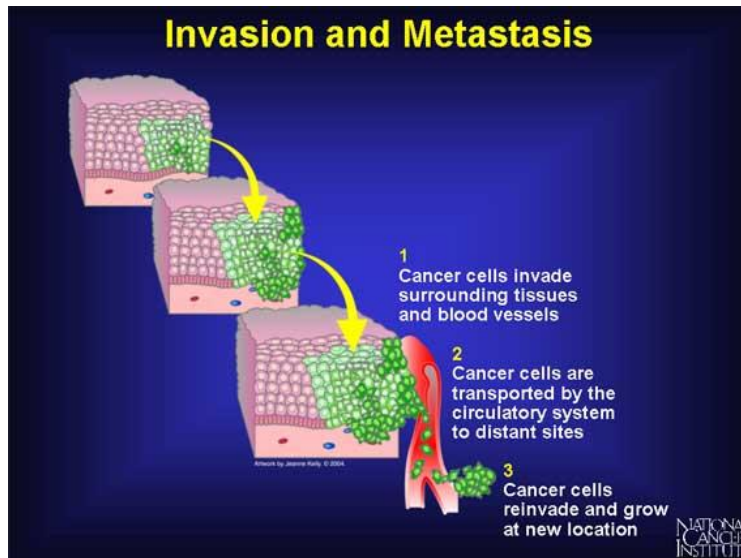
## A damaged cell → apoptosis



### Example of Normal Growth



### Invasion and Metastasis



## What Causes Cancer?

- Toxic \_\_\_\_\_
- Environmental radiation
- Viruses
- Stress
- Diet
- \_\_\_\_\_
- Smoking

## Tumor Staging

The doctors will answer three questions to determine how far the cancer has progressed:

1. How \_\_\_\_\_ is the tumor?
2. Have cancer cells spread to \_\_\_\_\_ in the area?
3. Has the cancer spread ( \_\_\_\_\_ ) to other parts of the body?

Based on the answers to these questions, the cancer is assigned a “stage” from I to IV.

## Tumor Grading

According to the appearance of the cancer cells, the pathologist will give a grade to the tumors from a grade I to a grade IV.

- How \_\_\_\_\_ do they look?
- How many cells in the specimen are trying to \_\_\_\_\_?
- How close do they \_\_\_\_\_ their original cell?

The fewer cell abnormalities, the lower the grade.

# Cancer Treatment

Cancer treatment is very \_\_\_\_\_.

There are over \_\_\_\_\_ diseases collectively called cancer.

They have common characteristics, but each one is unique.

One instance of cancer may have 5 or 6 slight \_\_\_\_\_ within the cancer cells.

Different \_\_\_\_\_ of cancer often require different treatments.

Each patient's experience with treatment will be different.

## National Cancer Institute Goals of Treatment

- Cure the cancer
- Control the \_\_\_\_\_ of the cancer
- Alleviate symptoms associated with the cancer

## Cancer Treatment

There are 3 primary therapies for cancer treatment:

- \_\_\_\_\_
- \_\_\_\_\_
- \_\_\_\_\_

## What is Chemotherapy?

- The goal is to reduce or eliminate \_\_\_\_\_
- Cannot distinguish between normal or cancerous cells
- Effects healthy cells as well as cancer cells
- Effects \_\_\_\_\_ cancer cells than healthy cells

**Hair Loss**

# 1 most troubling side effect for women and for many men.  
Not all chemotherapies cause hair loss.

**Nausea and Vomiting**

Nausea and vomiting are among the most prevalent side effects stemming from certain cancer treatment as well as certain cancers.

**Fatigue**

May be as result of the body’s response to having to work harder to rid itself of the toxic substances left behind.

**Low Blood Cell Counts**

**Red Blood Cells:**

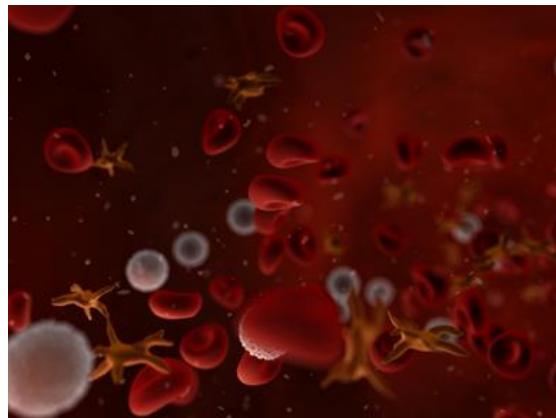
Carry oxygen throughout the body

**Platelets:**

Help with blood clotting

**White Blood Cells:**

Fight infection



**Cancer Treatment**

The goal of therapy is to optimize the amount of \_\_\_\_\_ that can be destroyed while minimizing the damage caused to \_\_\_\_\_ cells by the treatment.

Along with Conventional Treatments, there are also two additional types of treatment options available...

- \_\_\_\_\_
- \_\_\_\_\_

# Types of Care: Conventional, Supportive & Integrative

## Conventional Treatment

- Includes surgery, chemotherapy and \_\_\_\_\_ treatments but also can include Immunotherapy and Advanced Genomic testing

## Supportive Care Services

- Include \_\_\_\_\_, nutrition, chiropractic care, behavioral health, spiritual support and more

## Integrative Care

- Treats the disease with surgery, chemotherapy, and other tools while also supporting patients' strength, stamina, and quality of life with \_\_\_\_\_
- It is not enough to kill the cancer without treating the pain, fatigue, depression or \_\_\_\_\_ that comes with a diagnosis of cancer to support the quality of life

## Our Journey of Hope Cancer Care Ministry Network



## Ministry Concierge Service

**888-696-HOPE**

**888-696-4673**

Exclusive **Our Journey of Hope Resource** for...

- Leaders who need information
- Patients or caregivers who need information
- Patients who would like to treat at COH

When you call...

**Oncology Information Specialists** will:

- Answer questions
- Discuss treatment options
- Facilitate second opinions when desired

In a few weeks...

We will send you a training video on

**[Navigating The Health Care System](#)**

This information will help you and your people when they need to act on a cancer diagnosis.

# Starting a Cancer Care Ministry

In this session we will discuss:

- \_\_\_\_\_ you will receive
- Cancer care ministry overview
- \_\_\_\_\_ training logistics

## Cancer Care Ministry On-line Toolkit

### Leader's Guide

- Your all-inclusive leadership on-line manual contains insight into starting and \_\_\_\_\_ the group, in addition to the full eight-week curriculum with instructional notes

### Leader's Introductory Video lesson

- Experienced cancer care ministers Pastor Percy McCray and Pastor Chip Gordon share \_\_\_\_\_ into leading the ministry training group

### Participant Workbooks (on-line)

- The eight-week curriculum complete with at-home \_\_\_\_\_, discussion questions and space for taking notes

### Eight on-line cancer care ministry training 'Video' lessons

- Each \_\_\_\_\_ corresponds with one of the eight lessons in the participant's workbook. These videos are supplementary, and do not take the place of the group leader

### Online ministry resources

- Leaders gain access to a supportive \_\_\_\_\_ of fellow ministers, promotional materials, and educational resources

### Emails from our Spiritual Outreach Coordinator

- These monthly emails are designed to \_\_\_\_\_ leaders, provide helpful tips and insight into cancer care ministry and guide the group

## Cancer Care Ministry Training Overview

1. Attend and complete this leadership training event
2. For eight weeks, you will lead 5-12 group members through the lessons in the workbook
3. In the last meeting, you will \_\_\_\_\_ the group members to begin cancer care ministry
4. Provide ongoing ministry within your local faith community

As soon as possible, speak to your congregation about your experience here and \_\_\_\_\_ the opportunity to join the eight-week ministry training group.

\_\_\_\_\_ participants via passive sign-up or actively seek out interested people.

Our Journey of Hope templates have been created and are available in the online ministry resources library to help you get the word out:

- \_\_\_\_\_ insert
- \_\_\_\_\_
- \_\_\_\_\_ slides



# Group Training Logistics

Buy-in and support of the \_\_\_\_\_ is essential to starting a ministry.

If the faith leader endorses this training and champions, it in front of the congregation, then the role of the group leader becomes that of an \_\_\_\_\_ instead of a persuader.

## Recommended Group Format

- 15 minutes – Leader prays, reviews last lesson, and introduces new lesson
- 30 minutes – Listen to audio lesson
- 30 minutes – Leader presents additional lesson content and reading materials
- 30 minutes – Follow-up exercise and guided discussion
- 15 minutes – Closing prayer, fellowship, and refreshments

## Leader’s Guide: Presenting the Lesson Content

The Leader’s Guide includes everything in the Participant Workbook, plus additional information to help you effectively train your cancer care ministers.

**Page 16** of the Leader’s Guide explains how the color-coded comment boxes are used throughout the curriculum.

The screenshot shows a page titled "Session 1 The Need Is Great" with a sub-section "Lesson 1 PRESENTED BY THE GROUP LEADER". The page contains biblical text, a reflection question, and a list of "Why Cancer is Different" points. Surrounding the page are several callout boxes with yellow and purple backgrounds, each pointing to a specific part of the page and explaining its purpose. The callouts include:
 

- Session 1 Objectives:** A box listing goals like understanding cancer, learning about the ministry, and knowing group members.
- Begin this session with a word of prayer...** A box encouraging the leader to pray and set the tone.
- Your tone as a leader will influence people...** A box advising on the leader's attitude and preparation.
- It is recommended that the entire introduction section be read aloud...** A box suggesting a group reading of the introduction.
- Mentally, emotionally, physically and spiritually:** A box pointing to the reflection question.
- Value Section 1 - Fill in the blanks from the video.** A box pointing to the video-based reflection question.
- Meaning Value Purpose:** A box pointing to the "Why Cancer is Different" list.
- Local Community:** A box pointing to the "Why Cancer is Different" list.
- It is recommended to transition directly from the video into the lesson...** A box pointing to the start of the lesson content.
- This section can be presented to the group in about 25-30 minutes...** A box pointing to the "Why Cancer is Different" list.
- Teach each of these points and elaborate, when possible, from personal experience.** A box pointing to the "Why Cancer is Different" list.
- This example communicates much more effectively when paraphrased than when read...** A box pointing to the "A Step in Someone Else's Shoes" section.

## Using the Video Lessons

At each group session, introduce the new lesson and then play the corresponding audio.

Each video lasts between \_\_\_\_ and \_\_\_\_ minutes and is intended to \_\_\_\_\_ and \_\_\_\_\_ the participants so that they are ready to receive what you have to say.

# Leader's Guide: Presenting the Lesson Content

### Session 1: The Need is Great

- Cancer is different than other types of sickness because in addition to the physical challenges it also attacks your \_\_\_\_\_ and \_\_\_\_\_
- More than \_\_\_\_\_ million people are diagnosed with cancer every year (American Cancer Society), which does not include family members, close friends and coworkers who are all impacted by this disease
- Cancer care ministry is critically important because it requires a heart that is \_\_\_\_\_ to the unique trials and spiritual effects of cancer
- Our goal is to bring hope to those who are dealing with cancer through \_\_\_\_\_ ministry

### Session 2: Know Your Enemy

- The harmful effects of cancer are physical, \_\_\_\_\_ and spiritual
- Cancer is best treated through surgery, chemotherapy or radiation combined with supportive care for an \_\_\_\_\_ approach
- Cancer impacts the spirit, mind and body of each person \_\_\_\_\_
- The goal of this ministry is to provide \_\_\_\_\_
- Cancer's assault on the \_\_\_\_\_ can do great damage
- \_\_\_\_\_ of cancer treatment can be just as hard on the body as the disease itself

### Session 3: The Dos and Don'ts

Cancer patients have special needs:

- Need to experience God's \_\_\_\_\_
- Need to be able to trust someone
- Need to minimize \_\_\_\_\_ reactions
- Need to be part of community
- Need to communicate \_\_\_\_\_

As cancer care ministers, we can help by:

- Treating them naturally
- Not \_\_\_\_\_ their experience
- Listening to their concerns
- Offering \_\_\_\_\_ hope
- Praying for them and with them
- Understanding their physical \_\_\_\_\_

### Session 4: A Marvelous Calling

- A ministering person is a \_\_\_\_\_ to another's journey and loves others as they are, whether they change or not
- Cancer care ministry is a specific \_\_\_\_\_
- Discovering our calling
- Taking an active role through cancer care ministry

### Session 5: Overcoming Fear

- One of our biggest roles is to put \_\_\_\_\_ into those who are overcome with fear
- We need to confront our own subconscious \_\_\_\_\_ in order to get close to people who are hurting
- Fear produces several types of responses: physical, \_\_\_\_\_, emotional and behavioral
- There are three styles of helping: enabler, rescuer and \_\_\_\_\_

## Session 6: Caring for Caregivers

Caregivers sometimes hurt more than the patient

- Fear
- Pressure to be \_\_\_\_\_
- Neglecting their own \_\_\_\_\_
- Ministry to caregivers can be either direct or \_\_\_\_\_

We can help by:

- Regular visits
- Helping with chores
- Offering a willing ear
- Giving a break

## Session 7: Practical Ministry

- Hospital Visitation
- Improving Your Communication

Cancer treatment:

- Often affects \_\_\_\_\_
- Can leave a person feeling overwhelmed with daily tasks
- Can leave a person depressed or wondering whether the fight is worth it
- Is usually expensive and not always covered by \_\_\_\_\_

## Session 8: The Least of These

Preserve Dignity

- \_\_\_\_\_ individuals
- \_\_\_\_\_ the person
- See \_\_\_\_\_ in them
- Seeking God's Heart
- Stepping Out
- Commissioning

## Online Ministry Resources & Supplementary Materials

- Each leader will receive exclusive access to the online ministry \_\_\_\_\_.
- Within the ministry resources, is a CLOSED 'Facebook' community that is designed as a place where you can network with each other, provide \_\_\_\_\_ and \_\_\_\_\_ throughout the program.

This Facebook community connects you to the leaders of every other Our Journey of Hope cancer care ministry across the country.

- **'Health, Hope & Inspiration'**, an award winning \_\_\_\_\_ podcast available at [www.HealthHopeAndInspiration.com](http://www.HealthHopeAndInspiration.com) that provides inspirational interviews with cancer patients, caregivers, physicians, and clinicians that will lift your spirit and encourage your soul.

After you leave here today, you will not be alone. We are all united in this ministry.

This network provides ongoing communication and valuable access to clinical as well as spiritual support and resources.

- In the online ministry resources, you will find supplemental \_\_\_\_\_ for each of the initial group lessons.
- The resource library will also include supplemental materials for the ongoing \_\_\_\_\_ after the eight-week training is completed.
- Some of this information is designed to be shared with cancer patients or caregivers, as appropriate.
- If you need assistance when logging in for the first time, please call our Spiritual Outreach Coordinator

## Online Resource Stewardship

Any material that you receive and/or see as part of this cancer care ministry leadership training is not to be reproduced.

Materials can/should only be distributed for establishing you're your own cancer ministry within your local church.

If you require any promotional materials, you may click on the 'Menu' button from the home screen and then click 'Logo Usage Guidelines', read the relevant terms and conditions and download materials and/or logos there.

## CREATE 'Church Name' w/OJOH Logo

[CLICK HERE TO CREATE YOUR CHURCH NAME WITH OJOH LOGO](#)

PLEASE REVIEW GUIDELINES BELOW BEFORE USAGE

**OUR JOURNEY OF HOPE® LOGO**

PARTNER NAMES OPTIONS/TEXT ONLY

	with Grace Life Church		
	at Grace Life Church	Cancer Care Ministry with Grace Life Church	Cancer Care Ministry GRACE LIFE CHURCH
	of Grace Life Church	Cancer Care Ministry at Grace Life Church	Cancer Care Ministry of GRACE LIFE CHURCH
	Grace Life Church		



## Ministry Examples

### One-on-one ministry:

- \_\_\_\_\_ visits
- Hospital visits
- Phone calls
- Note cards written
- Texts/emails
- Prayer – with patient and/or \_\_\_\_\_

## Ministry Tips

- Fundraisers to help with practical financial needs
- Create a \_\_\_\_\_ about your ministry. Display at doctor's offices, counselors' offices
- Identify \_\_\_\_\_ in the congregation or community who can provide help to the patients/caregivers
- Annual memorial service
- Periodic support group for patients and/or caregivers to offer encouragement, place to vent, and educate
- Connection between patient/caregivers and the congregation (office/staff)
- Data collection sheet/card for each patient
- Meals
  - [www.MealTrain.com](http://www.MealTrain.com)
  - [www.CareCalendar.org](http://www.CareCalendar.org)
- Transportation (to doctor visits, errands)
- Household help and/or yard help
- Advance Directives

## The Importance of Ministry HIPAA Privacy

The more people you reach, the more important ministry HIPAA privacy will become. Respecting privacy is important for relationships and can have legal implications.

Do not publish personal information or photos of patients you minister to without their written permission. This includes posting on your church website, social media, or even prayer lists on the church bulletin board.

Anytime you connect a person's name or image to a health condition, you are approaching a sensitive issue.

### Getting Started

1. Watch the Leaders Introductory Video
2. Review all the \_\_\_\_\_ materials
3. Ask your senior faith leader to \_\_\_\_\_ the program and announce the beginning of the ministry \_\_\_\_\_ from the pulpit
4. Recruit \_\_\_\_\_ to \_\_\_\_\_ participants (start a second group if there is overwhelming interest in the program)
5. Choose a \_\_\_\_\_ and \_\_\_\_\_ for each of the meetings
6. Teach the curriculum to the group
7. Begin cancer care ministry



# Cancer Care Leadership Training Answer Key

(Answers are listed by page number)

## Day One

- |  |  |
|--|--|
| <p><b>2:</b> spiritual based<br/>tools<br/>insight and resources<br/>2004<br/>2013</p>   | <p><b>6:</b> 40.5%</p>   |
| <p><b>3:</b> Immersive<br/>networking<br/>action plan<br/>curriculum<br/>access<br/>network<br/>burdens<br/>encouraging</p>  | <p><b>7:</b> surfaces<br/>supporting<br/>immune<br/>bone marrow<br/>DNA<br/>Treatment<br/>results</p>  |
| <p><b>4:</b> hope<br/>death sentence<br/>Family and caregivers<br/>re-evaluate<br/>ostracized<br/>defined<br/>health<br/>time or energy<br/>emotional and spiritual<br/>peace and joy<br/>friendships<br/>faith<br/>compassion<br/>bitterness<br/>hope<br/>punished<br/>Accepting<br/>Reassessment</p> | <p><b>9:</b> chemicals<br/>Genetics<br/>large<br/>lymph nodes<br/>(metastasized)<br/>irregular<br/>grow<br/>resemble</p>                           |
| <p><b>5:</b> abandonment<br/>anger<br/>frustration<br/>Isolation<br/>Embarrassment<br/>advice<br/>family<br/>treatments<br/>resources<br/>behaviors<br/>Financial</p>  | <p><b>10:</b> complex<br/>200<br/>variations<br/>subtypes<br/>progression<br/>Surgery<br/>Radiation<br/>Chemotherapy<br/>cancer cells<br/>MORE</p> |
|  | <p><b>11:</b> tumor<br/>normal<br/>Immunotherapy<br/>Advanced Genomic testing</p>  |
|  | <p><b>12:</b> radiation<br/>naturopathic<br/>supportive care service<br/>anxiety</p>   |

Day Two

- |   |  |
|---|--|
| <p><b>14:</b> Resources<br/>Group<br/>Nurturing<br/>insight<br/>prayer points<br/>video session<br/>network<br/>encourage</p>   | <p><b>18:</b> trivializing<br/>spiritual based<br/>limitations<br/>companion<br/>calling<br/>courage<br/>fears<br/>cognitive<br/>empowerer</p> |
| <p><b>15:</b> commission<br/>announce<br/>Recruit<br/>Bulletin<br/>Flyer<br/>PowerPoint</p>   | <p><b>19:</b> strong<br/>health<br/>indirect<br/>self-image<br/>insurance<br/>Respect<br/>Value<br/>God</p>                                    |
| <p><b>16:</b> senior leader<br/>activator</p>   | <p><b>20:</b> resources<br/>encouragement feedback<br/>weekly<br/>handouts<br/>monthly meetings</p>  |
| <p><b>17:</b> 15 and 30<br/>inspire engage<br/>mind spirit<br/>1.9<br/>sensitive<br/>practical<br/>emotional<br/>integrative<br/>differently<br/>hope<br/>mind<br/>side effects</p> | <p><b>22:</b> Home<br/>Family<br/>brochure<br/>counselors</p>  |
| <p><b>18:</b> love<br/>negative<br/>feelings</p>  | <p><b>23:</b> curriculum<br/>endorse<br/>training group<br/>5 to 12<br/>time location</p>  |